

Building Community Together

Andrea King

Head of Service, Prevention & Building
Community Resilience

Strategic Context

Funding to Local Authorities and other statutory partners has reduced, and will reduce further

We cannot continue to do 'more with less'; we need to think and work together differently

If we succeed we will:

- 'help people to help themselves' and
- 'help people to help each other'and....

then be able to focus our services on those who most need our help

What does different look like?

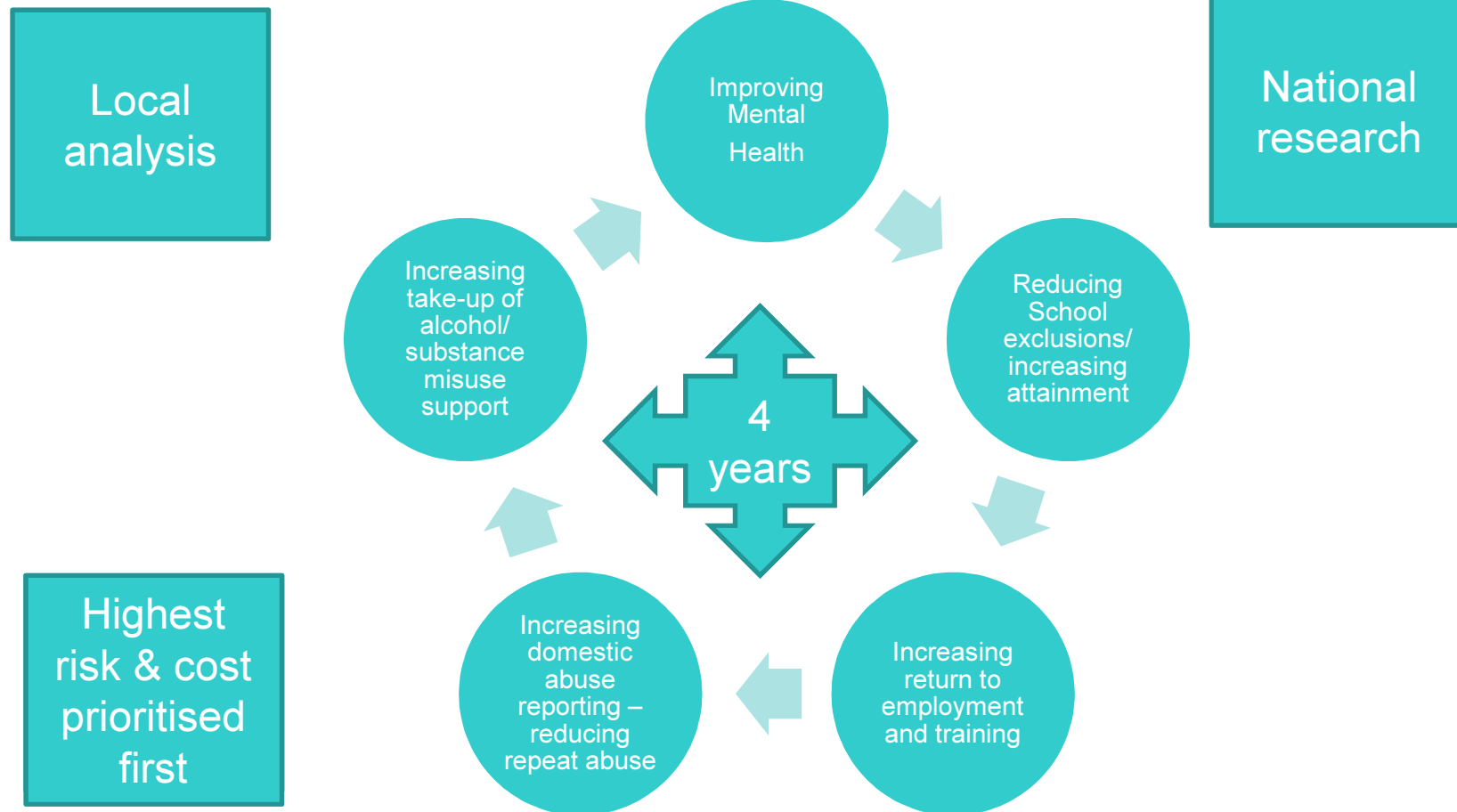
Helping 'early in the life of a problem'

- Not doing things **to** people
- Not doing things **for** people
- But doing things **with** people

Building on **community resources, skills, experience and expertise**

Looking local first - never assuming a 'service' is a solution

Analysis - What do we start with?



Transforming Communities

Greenham

Calcot

Newbury
town

Mortimer
(inc building
a bridge to
Burghfield)

Thatcham

Lambourn
(inc building
a bridge to
Hungerford)



Wiltshire
COUNCIL

Partnership involves our residents

Community conversations

What are the local talents?

What could be better?

What are the hard things to fix?



Community planning – developing local solutions
(small grants available ‘Building Community grant’)



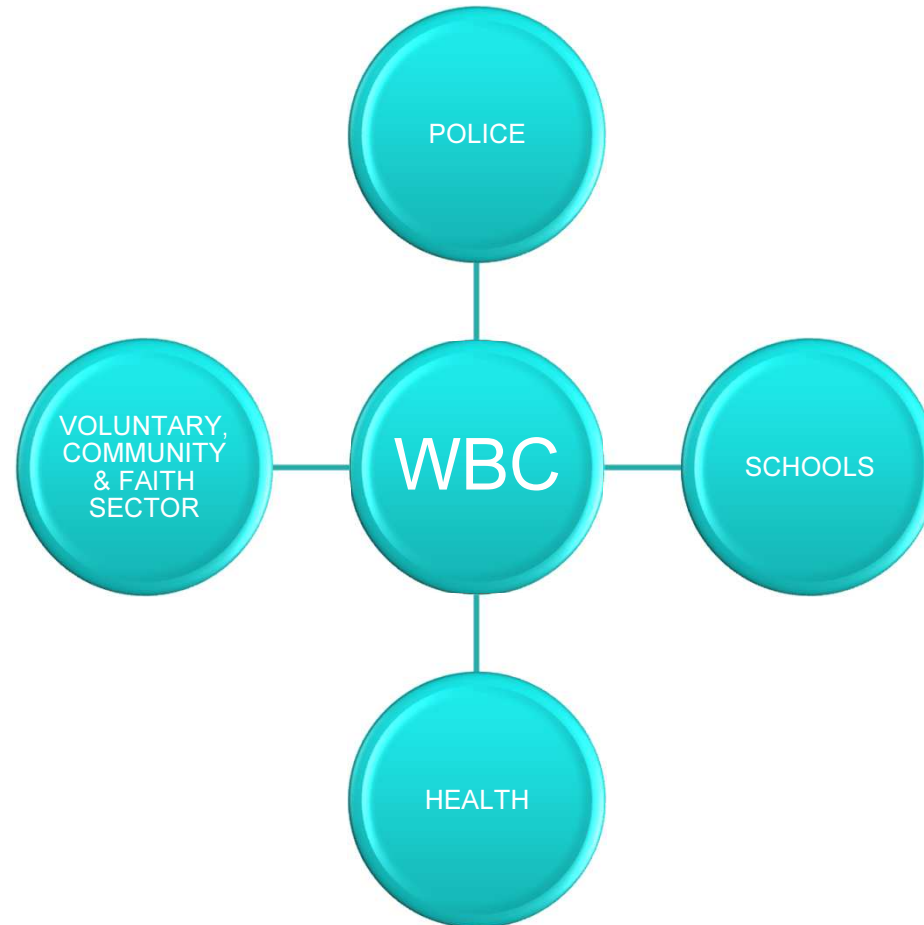
Implementing solutions
Monitoring impact
Sustaining change



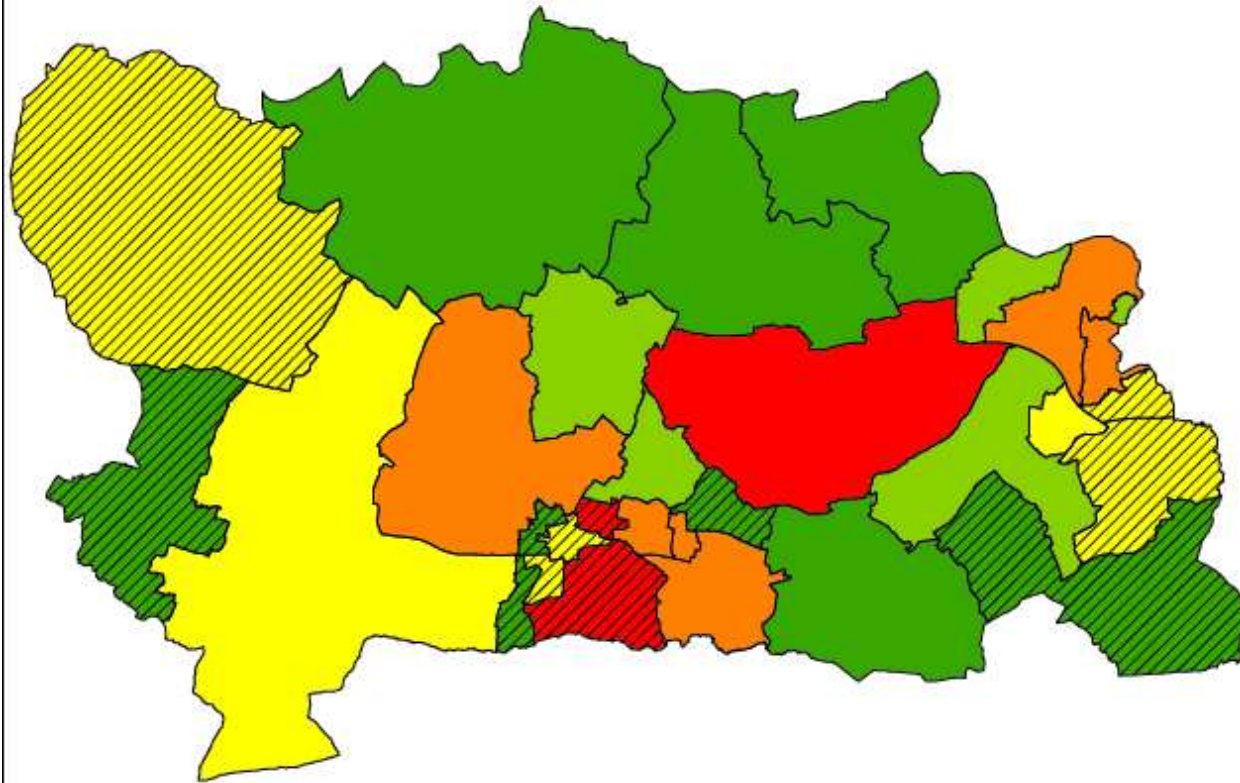
What's happened so far?



Partnership implementation



Emotional Health need looks something like



An Emotional Health Academy

- ❑ Health colleagues had 2 part time workers covering the whole district
- ❑ With help we've been able to triple that
- ❑ Those workers were available to provide support, advice and outreach in your areas
- ❑ You will be able to access additional training and advice from psychologists
- ❑ Children and families will be seen within weeks rather than months
- ❑ We have clinical specialists behind the scenes

Relevance for DES

- ❑ We want to hear from geographical communities, or people linked with similar circumstances or experiences
- ❑ Do you want to starting a conversation to consider:
 - Thinking about the priorities – asking what are the local gaps and needs?
 - What skills and talents are that you have?
 - What could we all contribute or create?
- ❑ Coming up with innovation...designing

solutionabidding...sustaining those changes.



Building Community Together

- ❑ When we come up with innovation or ideas, we need to ensure:
 - It's sustainable
 - It builds on local skills, talents and experience
 - It will make a difference to local people
- ❑ Building Community Together fund is available, with modest revenue and capital investment

Any questions?

THANK YOU



West Berkshire
COUNCIL